

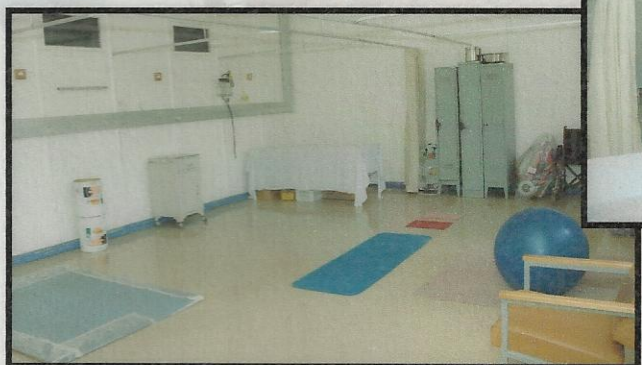


VIRGINIA

Virginia is a small town surrounded by mines. It is less than half an hour's drive from Welkom.

KATLEHO District Hospital / Distriks-hospitaal / Sepetlele sa Setereke		
Visiting Hours 10:00 - 10:15	Besook Tye 15:00 - 16:00	Dinako tsa Baeti 19:00 - 20:00
Services Available	Dienste Besikikbaar	Tshebetso tse teng:
General Wards (Male and Female)	Algemeen Sala (Mans en Vroes)	Dikwete tsa Kakaretso (Sama le Siamani)
Children's Ward	Kinders Saal	Wate ya Bana
Clinical	Ongevalle	Karolo ya tsa Tshohanyetso
Theatre	Taster	Dikhipeng
Maternity Ward	Kraam Saal	Wate ya Batwetse
X-Ray	X-Straal	Diporseng
Pharmacy	Apothek	Merianeng

Katleho, the District Hospital in Virginia, is a 72 bed hospital. The Hospital provide health care services to the communities of Virginia, Meloding and surrounding district.



Occupational Therapy, Physiotherapy & Speech Therapy are provided to both in- and outpatients, as well as community outreaches.



In one of the outreach towns, Henneman, a very successful geriatric recreation group was established. Activities to improve cognitive, emotional and social skills



as well as physical abilities was presented in order to enhance community integration.

